

ARAKAN-CHIN-NAGA YOMA BASIN

ESCAP ATLAS OF STRATIGRAPHY

(IGCP PROJECT No. 32)

Compiled by

U Than Nyunt & U Chit Saing

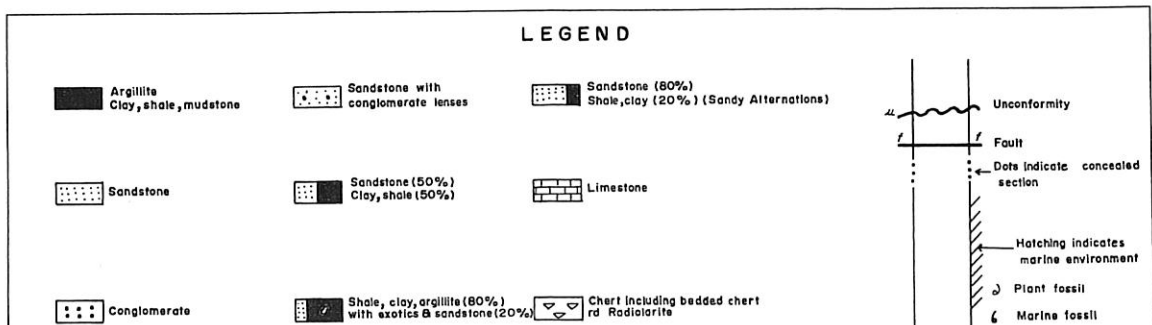
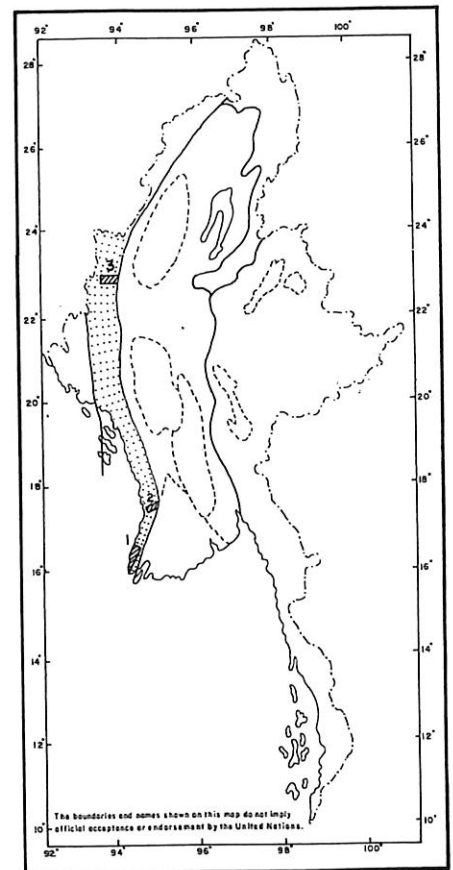
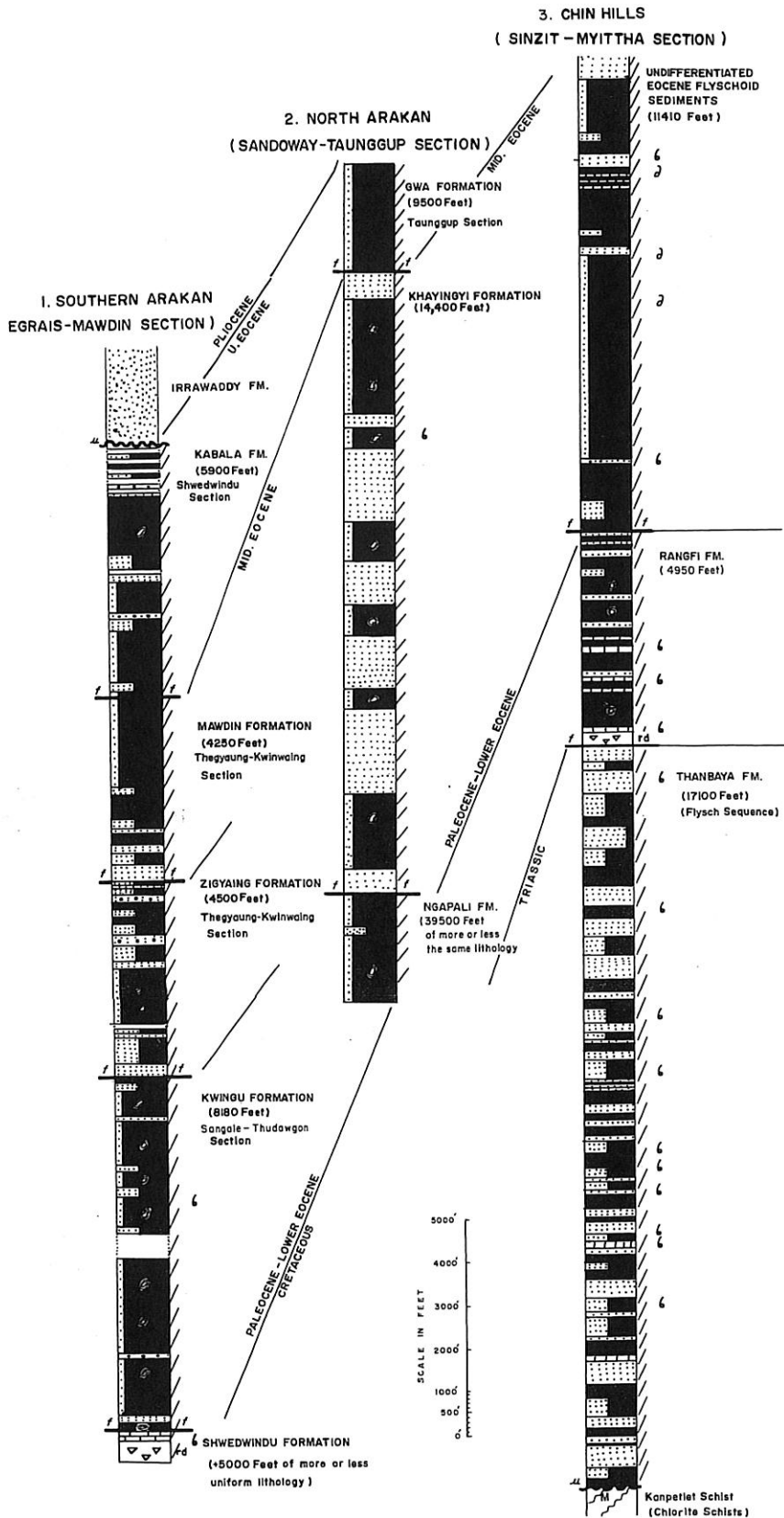
Myanma Oil Corporation.

to accompany ESCAP Mineral Resources Development Series No.44

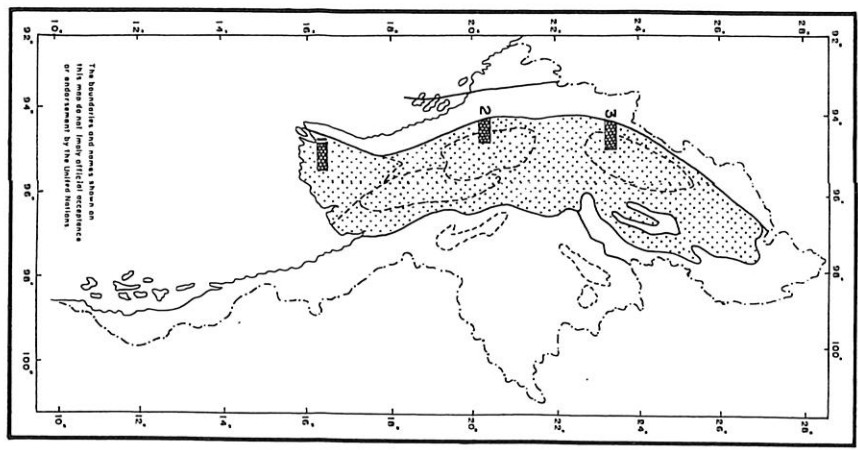
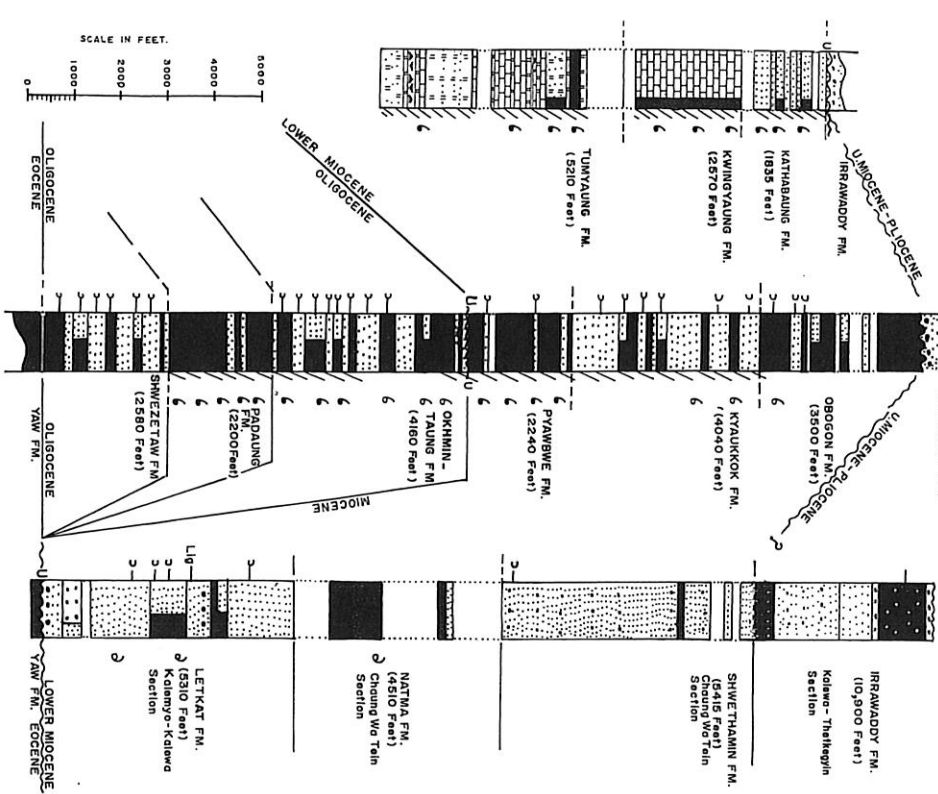
(All sections composite)

Scale 1:25,000

- Column 1 = Negrais -Mawdin Section of Southern Arakan Area
- Column 2 = Sandoway-Taunggup Section of Northern Arakan Area
- Column 3 = Sinzit - Myittha Section of Chin Hills Area



1. IRRAWADDY DELTA (MYAUNGMYA AREA)
 2. MINBU INFRABASIN (PAUNG STREAM SECTION)
 3. CHINDWIN INFRABASIN (KALEWA-KALEWA-CHAUNG WA TEIN-THEHKEGYIN SECTION)



The boundaries and names shown on this map do not imply official acceptance or endorsement by the United Nations.

CENTRAL BASIN

(OLIGOCENE-MIOCENE-PLIOCENE)

ESCAP ATLAS OF STRATIGRAPHY

(ICGP PROJECT No. 32)

Compiled by

U Thon Nyunt & U Chit Saing

Myanma Oil Corporation.

to accompany ESCAP Mineral Resources Development Series No. 44

(All sections composite)

Scale 1:25,000

Column 1 = Sections in Myaungmya Area, Irrawaddy Delta Infrabasin.

Column 2 = Paung Stream Section, Minbu Infrabasin

Column 3 = Kalewa-Kalewa-Chaung Wa Tein-Thehkegyin Sections, Chindwin Infrabasin

LEGEND

- Clay, Shale, Mudstone
- Conglomerate
- Sandstone with Conglomerate lenses
- 50% Sandstone, 50% Siltstone, clay
- 50% Sandstone (Sandy Alternations)
- Siltstone
- Clay, Shale (80% with Sandstone interbeds (20% Siltstone Alternations))

- Limestone
- 60% Conglomerates (40% Sandstones)
- Tuff
- Agglomerate
- Tuffaceous Sandstone, Clay, Grit, Shale

- Unconformity
- Plant fossil
- Brachiopod fossil
- Shedding indicators marine environment
- Marine Fossil
- Dots indicate concealed sections

ESCAP ATLAS OF STRATIGRAPHY

(IGCP PROJECT No. 32)

Compiled by

U Than Nyunt & U Chit Saing

Myanma Oil Corporation.

to accompany ESCAP Mineral Resources Development Series No. 44

(All sections composite)

Scale 1:25,000

Column 1 = Minbu-Pakokku Area Sections of Minbu Infrabasin.

Column 2 = Kalemyo-Kalewa Sections of Chindwin Infrabasin.

